

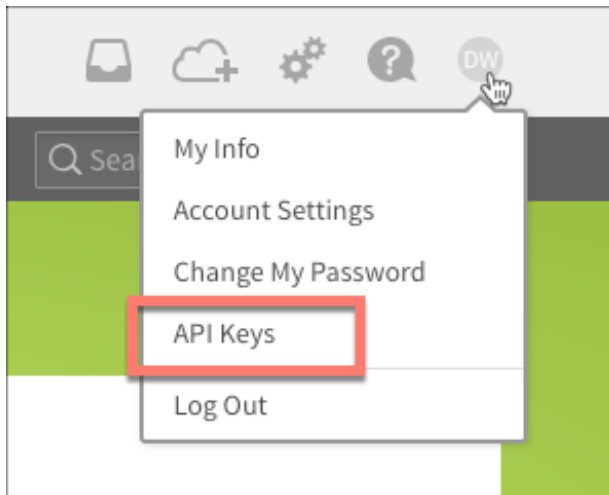
BambooHR API Provider Setup

Last Modified on 02/12/2019 4:13 pm EST

To authenticate a BambooHR connector instance, you must use your **API Key** and the **BambooHR Domain** that you use to log in to BambooHR. Each user has their own **API Key**, while the **BambooHR Domain** is unique to their company and appears in the BambooHR url as **BambooHR Domain.bamboohr.com**.

See the latest setup instructions in the [BambooHR documentation](#) . To create an API Key:

1. Log in to your account at [BambooHR](#) .
2. Click your profile at the top right.
3. Click **API Keys**.



4. Click **Add New Key**.
5. Enter a name, and then click **Generate Key**.
6. Record the **API Key** .

Add New API Key ✕

API Key Name

This name can be anything. It is just a way for you to keep track of your different API Keys.

API Key COPY KEY

Done Cancel

You can also use an **API Key** specifically for integrations. See [BambooHR's instructions to set up an integration-only API Key](#) .
